

# 2STAND®

*Patent Pending*

## Artwork and cutting information



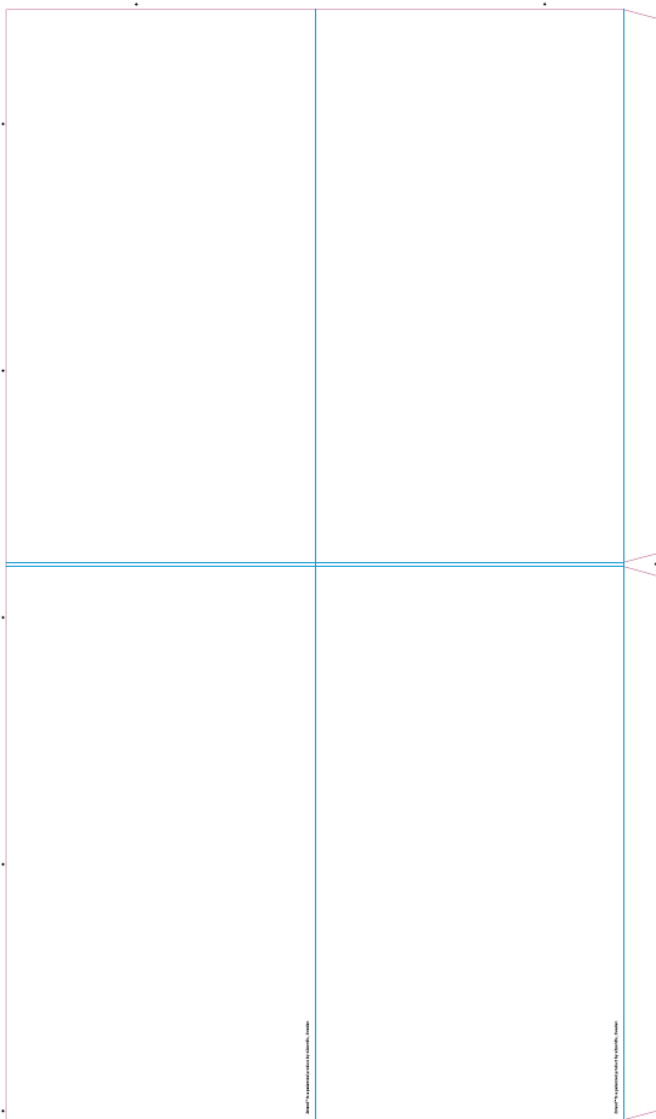
# 2stand artwork and cutting info

## General Info

There are today two different shapes on printable covers, elliptic and rectangular. Each with two different heights. Make sure to start with the correct template.

The template has black dots uses for cutting tables.

1. Open a PDF template from x2nordic in Illustrator.
2. Mount the artwork in layer "print" (-2;-2) in upper left corner. (2 mm bleeding all around). Make sure there is space between artwork and aim/cutting marks.
3. Texts must be vectorised VERY IMPORTANT (Mac shift+cmd+o; PC shift+ctrl+o or "create text path" in meny text)
4. Save as EPD of PDF (recommened resolution is 300 dpi)



## 2stand artwork and cutting info

### Ellipse

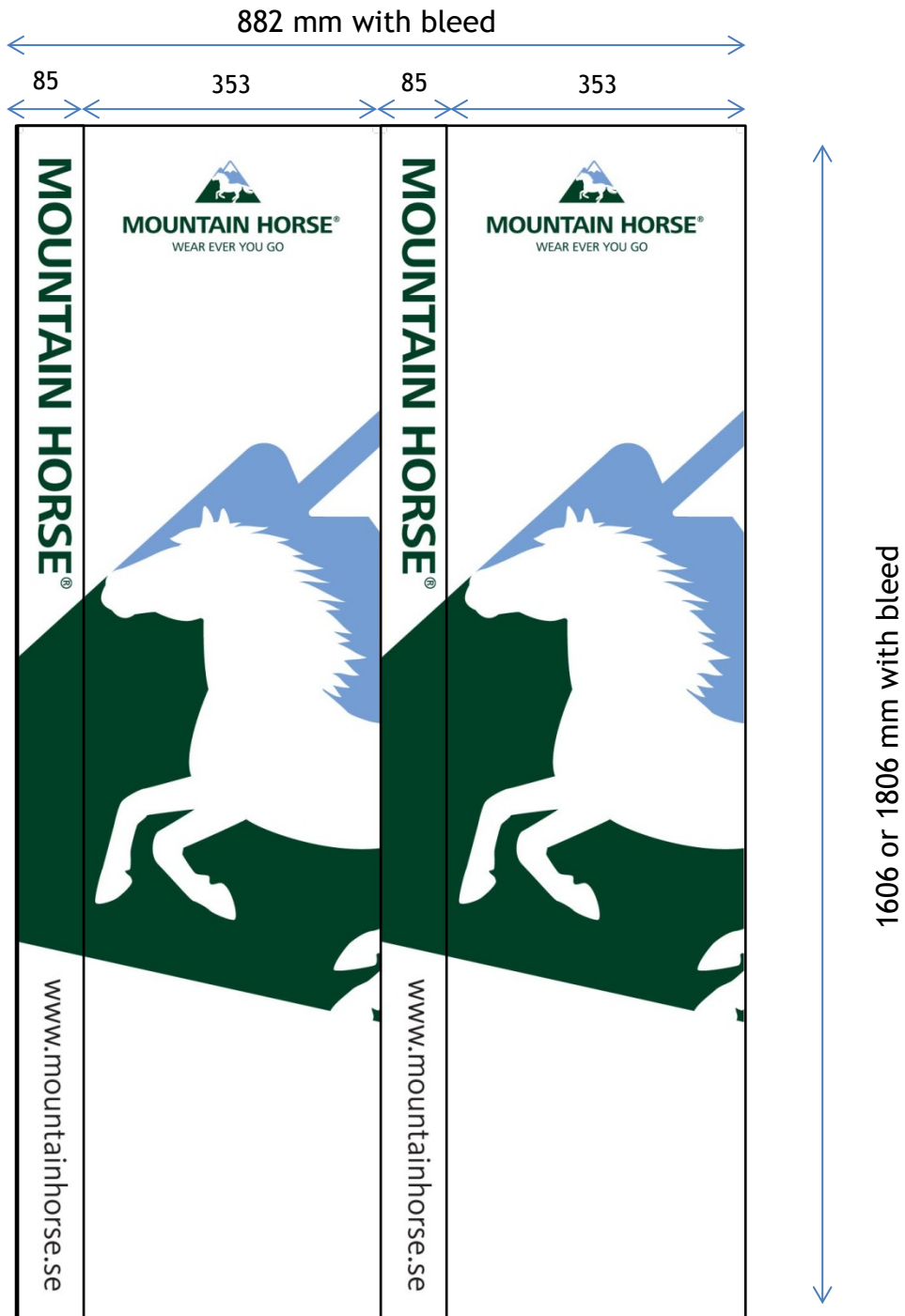
The cover itself is 1000 by 1600/1800 mm. With 2 mm bleed all around the print file should be 1004 x 1604/1804 mm. After print it's folded to get the front and back side.



## 2stand artwork and cutting info

### Rectangular

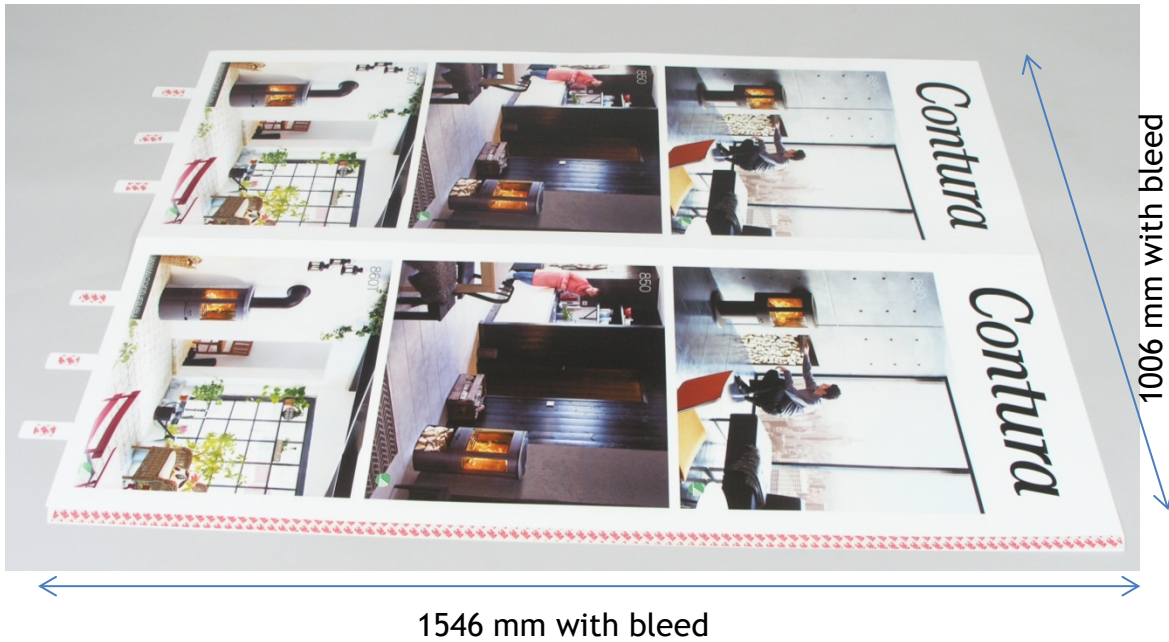
The standard cover itself is  $85+353+85+353 = 876$  by 1600/1800 mm. With 2 mm bleed all around the print file should be 880 x 1604/1804 mm. After print it's folded to get the front, back and two long sides.



## 2stand artwork and cutting info

### 2stand Luna (Internal Lightning)

The cover itself is 1000 by 1540 or 1840 mm. With 2 mm bleed all around the print file should be 1004 x 1544 or 1844 mm. After print it´s folded to get the front and back side.



Note that 15 mm of the height the top will disappear into the plastic cover. And 10 mm at the bottom into the foot.